

**THE VISUAL AIDS ON THE FOLLOWING
PAGES ARE FOR REFERENCE ONLY AND
NOT INTENDED FOR OFFICIAL USE.**

**TO PURCHASE OFFICIAL VISUAL AIDS PLEASE CONTACT
THE SPECIALTY CROPS INSPECTION DIVISION'S
EQUIPMENT AND FORMS DEPOT**

**USDA, AMS, FVP, SCI
831 MITTEN ROAD, ROOM 200
BURLINGAME, CA 94010
PHONE: 650-552-9073
FAX: 650-552-9147**

[EQUIPMENT CATALOG](#)



NOT DAMAGED



DAMAGED

GUIDE FOR SCORING
VIRGINIA TYPE PEANUTS
IN THE SHELL

Aspergillus flavus Mold
(A. flavus)

Other Molds

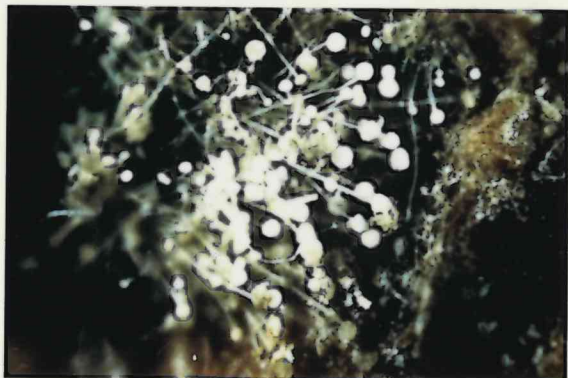
1.



2.



3.



1. Kernel slightly magnified to show fuzzy or beady appearance of A. flavus.
2. Kernel magnified to show conidial heads indicating A. flavus.
3. Kernel under higher magnification to show pronounced characteristics of A. flavus.

4.



5.



4. Kernel magnified to show characteristic of A. Niger (black conidial heads).
5. Kernel magnified to show other types of mold.

Aspergillus flavus Mold
Identification

PEN - CP - 3 Revised 9/82

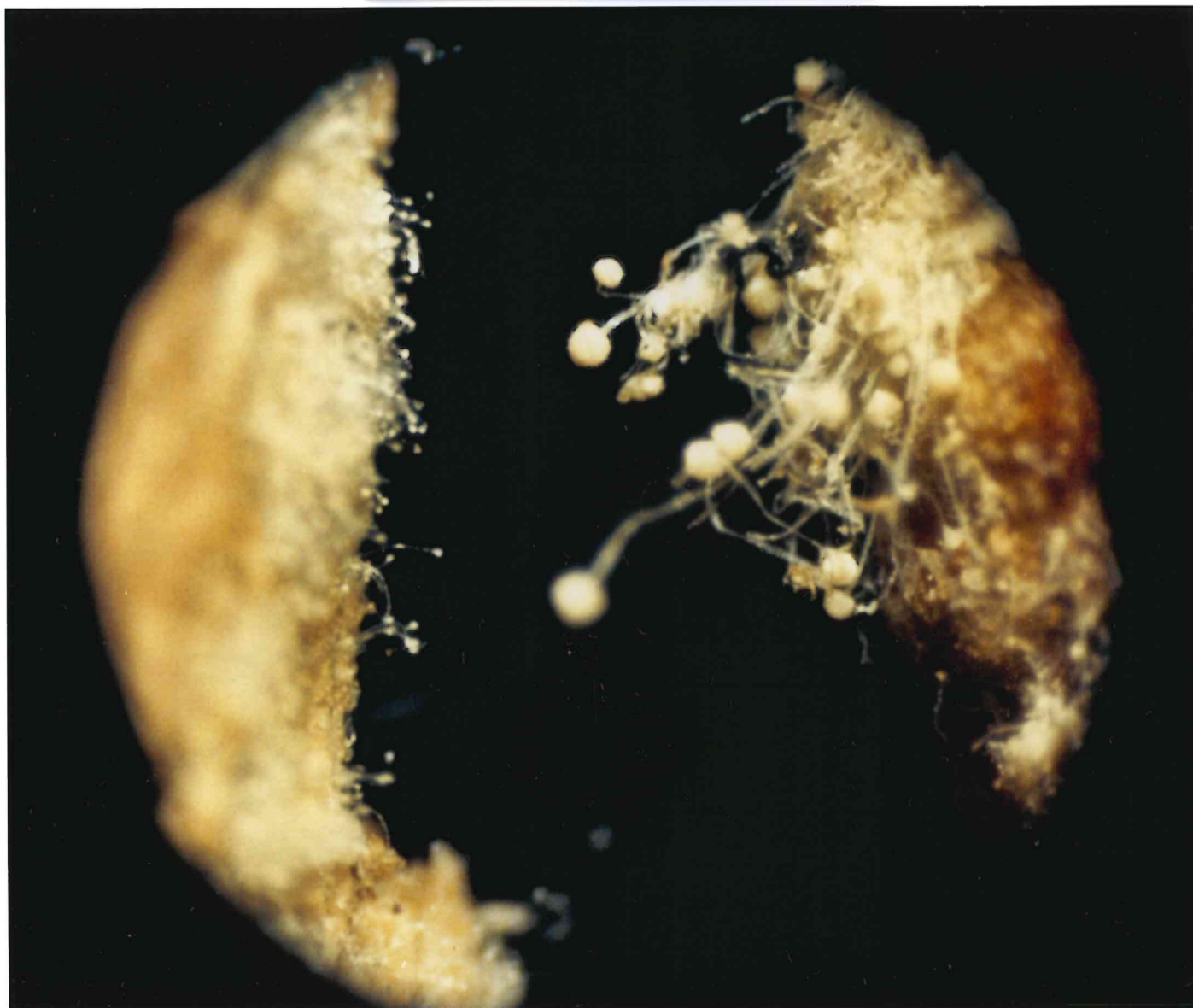
Top photo shows comparison of "mini-mold" (left) and A-flavus (right) under 4X magnification.

The small stems and cone shaped heads of "mini-mold" compared to the large stems and round conidial heads of A-flavus are more apparent in the enlargement below.



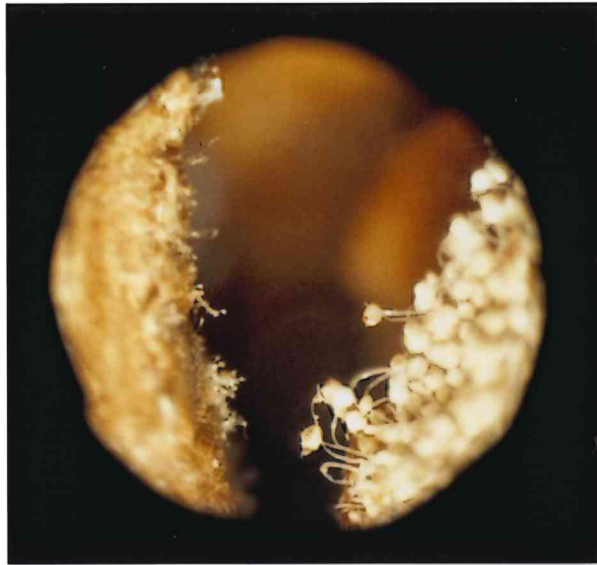
"Mini-Mold" /A-Flavus
Comparison

Identification
PEN-CP-3-A-6/89



Top photo shows comparison of “mini-mold” (left) and A-flavus (right) under 4X magnification.

The small stems and cone shaped heads of “mini-mold” compared to the large stems and round condial heads of A-Flavus are more apparent in the enlargement below.



“Mini-mold” /A-flavus
Comparison

Identification
PEN-CP-3-B-6/89





ILLUSTRATING DISCOLORED SHELLS OF MILLED PEANUTS (Virginia Type)

Top Four Shells-----Not damaged by discoloration

Bottom Four Shells-----Damaged by discoloration

Discoloration of Peanuts
PEN-CP-4
March 1990
(previously 12/73)



Not Damage

Damage

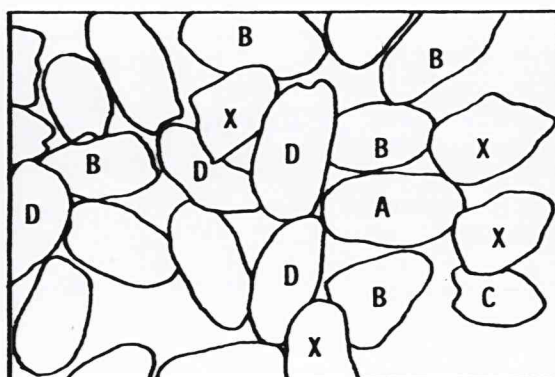
Not Damage

Damage

PEANUT KERNELS SHOWING CHARACTERISTICS OF FREEZE DAMAGE

Freeze damaged peanuts have a slightly dull and faded skin color with the veins often becoming dark and conspicuous. The flesh has a glassy or an abnormal dull appearance and may also show a noticeable yellow, brown or gray discoloration on the oval side of the kernel.

The kernels must be split, the skins removed, and both the flat and round sides examined when determining freeze damage. The flesh of the half kernel must have an indication of freeze damage to be scored. Do not confuse surface discoloration not penetrating the flesh with freeze damage. Any peanut with a definitely rancid flavor is damaged, regardless of skin or flesh color.



PEANUT KERNELS – FREEZE DAMAGE
Pen-CP-6 (Revised 9/89)

X Indicates kernels not having definite characteristics of freeze damage and are not scorable.

Remaining kernels show one or more of the following definite characteristics of freeze damage and are scorable.

- A Vein discoloration with glassy appearance.
- B Yellow to mustard discoloration accompanied by glassy appearance.
- C Yellow to brown discoloration accompanied by glassy appearance.
- D & Unmarked kernels -- Kernels which have a glassy appearance but do not have the discoloration as described in A. B & C shall be scored as damage only if hard, brittle and/or have a distinctly objectionable taste.

SHELL DISCOLORATION ON VALENCIA TYPE PEANUTS



NATURAL SHELL COLOR



25% OF SURFACE SHOWING DISCOLORATION

PN-2, 7/86

SURFACE DISCOLORATION



MINOR DEFECTS



PN-CP-1-8/86

ADHERING DIRT ON PEANUTS



MINOR DEFECTS

DAMAGE

PN-CP-2-8/86

ADHERING MATERIAL ON PEANUT KERNELS



Minor Defects

Whole or half kernels with adhering material in equal or greater amounts than shown are scored as minor defects.

USDA

**PN - CP - 5
Adhering Material
on Peanut Kernels
November 1995**

GREEN FLESH DISCOLORATION



Maximum allowed before minor.

PNT-CP-10
February 2003

GREEN FLESH DISCOLORATION



Maximum allowed before minor.

PNT-CP-10
February 2003

GREEN FLESH DISCOLORATION



Maximum allowed before minor.

PNT-CP-10
February 2003

GREEN FLESH DISCOLORATION



Maximum allowed before minor.

PNT-CP-10
February 2003

GREEN FLESH DISCOLORATION



Maximum allowed before minor.

PNT-CP-10
February 2003

GREEN FLESH DISCOLORATION



Maximum allowed before minor.

PNT-CP-10
February 2003

GREEN FLESH DISCOLORATION



Maximum allowed before minor.

PNT-CP-10
February 2003

GREEN FLESH DISCOLORATION



Maximum allowed before minor.

PNT-CP-10
February 2003

High Moisture Foreign Material For Peanuts



PURPLE FLESH DISCOLORATION



Maximum allowed before minor.

PNT-CP-9
July 2000

PURPLE FLESH DISCOLORATION



Maximum allowed before minor.

PNT-CP-9
July 2000

PURPLE FLESH DISCOLORATION



Maximum allowed before minor.

PNT-CP-9
July 2000

PURPLE FLESH DISCOLORATION



Maximum allowed before minor.

PNT-CP-9
July 2000

PURPLE FLESH DISCOLORATION



Maximum allowed before minor.

PNT-CP-9
July 2000

PURPLE FLESH DISCOLORATION



Maximum allowed before minor.

PNT-CP-9
July 2000

PURPLE FLESH DISCOLORATION



Maximum allowed before minor.

PNT-CP-9
July 2000

PURPLE FLESH DISCOLORATION



Maximum allowed before minor.

PNT-CP-9
July 2000

PURPLE FLESH DISCOLORATION



Maximum allowed before minor.

PNT-CP-9
July 2000

PURPLE FLESH DISCOLORATION



Maximum allowed before minor:

PNT-CP-9
July 2000